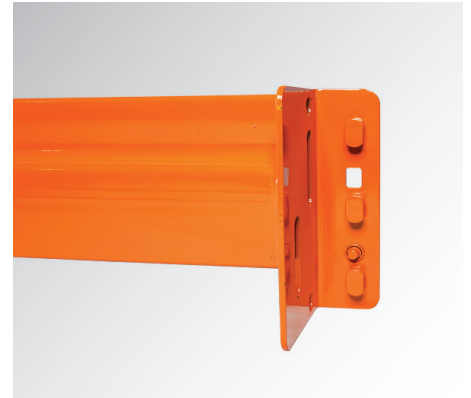


ROLL-FORMED STEP BEAMS



Pallet rack step beams support both palletized and non-palletized loads. The step beam allows for the inclusion of pallet supports or various forms of decking (wire, wood, corrugated metal, etc.) Step beams are available in a variety of standard lengths and beam face heights, which creates a large array of individual load-bearing capacity beams. In addition, step beams can be customized for specialty applications such as push-back, pallet flow or pick module racking.

FEATURES

- | 1-5/8" Beam Step Height
- | Universal Connectors
- | Powder-Coated Paint (Most RAL colors)
- | 'Pull Pin' Safety Clip (avoids beam dislodgement)
- | Interchangeable with certain brands
- | RMI Approved

PRODUCT INFORMATION

STEP BEAMS	DESCRIPTION
BEAMS LENGTHS:	48"-192"
GAUGE THICKNESS:	14 & 16
PIN QTY/CONNECTOR	3 & 4
BEAM FACE HEIGHTS:	2-1/2", 3", 3-1/2", 4", 4-1/2", 5", 5-1/2", 6"
STOCKING COLOR:	Orange

Note: Beam Drops and Adjustable Beams Available Upon Request. Additional Colors Available Upon Request. Customize to Order.

BEAMS 16 GAUGE - 3 PIN

SPAN	2-1/2"	3"	3-1/2"	4"	4-1/2"	5"	5-1/2"	6"
48"	4,680	5,830	7,160	8,650	10,300	12,080	14,010	16,070
54"	4,240	5,260	6,430	7,750	9,210	10,790	12,500	14,330
84"	2,330	3,240	4,350	5,180	6,100	7,110	8,190	9,350
90"	2,070	2,860	3,880	4,870	5,730	6,660	7,680	8,760
96"	1,850	2,550	3,450	4,570	5,400	6,270	7,220	8,240
102"	1,670	2,290	3,090	4,080	5,110	5,930	6,820	7,780
108"	1,510	2,070	2,780	3,670	4,750	5,630	6,460	7,360
114"	1,380	1,880	2,530	3,330	4,290	5,360	6,140	6,990
120"	1,270	1,720	2,300	3,030	3,900	4,950	5,720	6,510
126"	1,170	1,580	2,110	2,760	3,560	4,510	5,300	6,020
132"	1,080	1,460	1,940	2,540	3,270	4,130	4,920	5,590
138"	1,000	1,350	1,800	2,340	3,010	3,800	4,580	5,190
144"	930	1,260	1,670	2,170	2,780	3,510	4,270	4,840

BEAMS 16 GAUGE - 4 PIN

SPAN	2-1/2"	3"	3-1/2"	4"	4-1/2"	5"	5-1/2"	6"
48"	4,950	6,080	7,390	8,860	10,500	12,260	14,170	16,220
54"	4,500	5,500	6,660	7,960	9,400	10,980	12,660	14,480
84"	2,560	3,490	4,560	5,380	6,290	7,280	8,350	9,500
90"	2,280	3,090	4,130	5,070	5,910	6,830	7,830	8,910
96"	2,050	2,770	3,680	4,790	5,580	6,450	7,380	8,390
102"	1,850	2,490	3,300	4,310	5,290	6,100	6,980	7,920
108"	1,680	2,260	2,980	3,880	4,970	5,790	6,620	7,510
114"	1,540	2,060	2,720	3,520	4,500	5,520	6,300	7,150
120"	1,410	1,890	2,480	3,210	4,090	5,140	5,870	6,650
126"	1,300	1,740	2,280	2,940	3,740	4,700	5,450	6,160
132"	1,210	1,610	2,100	2,710	3,440	4,310	5,060	5,720
138"	1,120	1,490	1,950	2,500	3,180	3,970	4,710	5,320
144"	1,050	1,390	1,810	2,320	2,940	3,670	4,400	4,960

BEAMS 14 GAUGE - 3 PIN

SPAN	3"	3-1/2"	4"	4-1/2"	5"	5-1/2"	6"
48"	7,140	8,830	10,730	12,840	15,110	17,560	20,180
54"	6,420	7,930	9,610	11,470	13,490	15,660	17,990
84"	3,810	5,260	6,380	7,560	8,840	10,220	11,710
90"	3,370	4,620	6,000	7,090	8,280	9,570	10,950
96"	3,000	4,100	5,490	6,680	7,790	9,000	10,300
102"	2,690	3,670	4,890	6,320	7,370	8,500	9,710
108"	2,430	3,310	4,400	5,740	6,980	8,050	9,190
114"	2,210	2,990	3,980	5,180	6,610	7,650	8,730
120"	2,010	2,730	3,610	4,700	5,990	7,130	8,130
126"	1,850	2,490	3,300	4,290	5,460	6,610	7,590
132"	1,700	2,290	3,030	3,930	5,000	6,140	7,000
138"	1,570	2,120	2,790	3,610	4,590	5,720	6,520
144"	1,460	1,960	2,580	3,330	4,240	5,300	6,080

Notes:

Capacities Based Upon Pair of Beams · Capacities Are Determined Per ANSI 2012 and RMI 2012 · Design Engineer Must Be Consulted For Loads of 10,000 lbs. or more
Uniform Distribution of Weight Is Assumed Along The Entire Length of Both Beams · Capacities Are For Static Loads Only. Consult Seismic Engineer For Seismic Loads
Values Shown Reflect The Capacity of The Beams Based On The Lesser of It's Strength In Bending or L/180 Deflection Criteria. Metrics table is measured in pounds.
Consult UMH or E.O.R. for 192" Beam Capacities. Drop beams, adjustable beams and other engineered beams available upon request. 2-1/2" face height beam is standard in 16 gauge only.

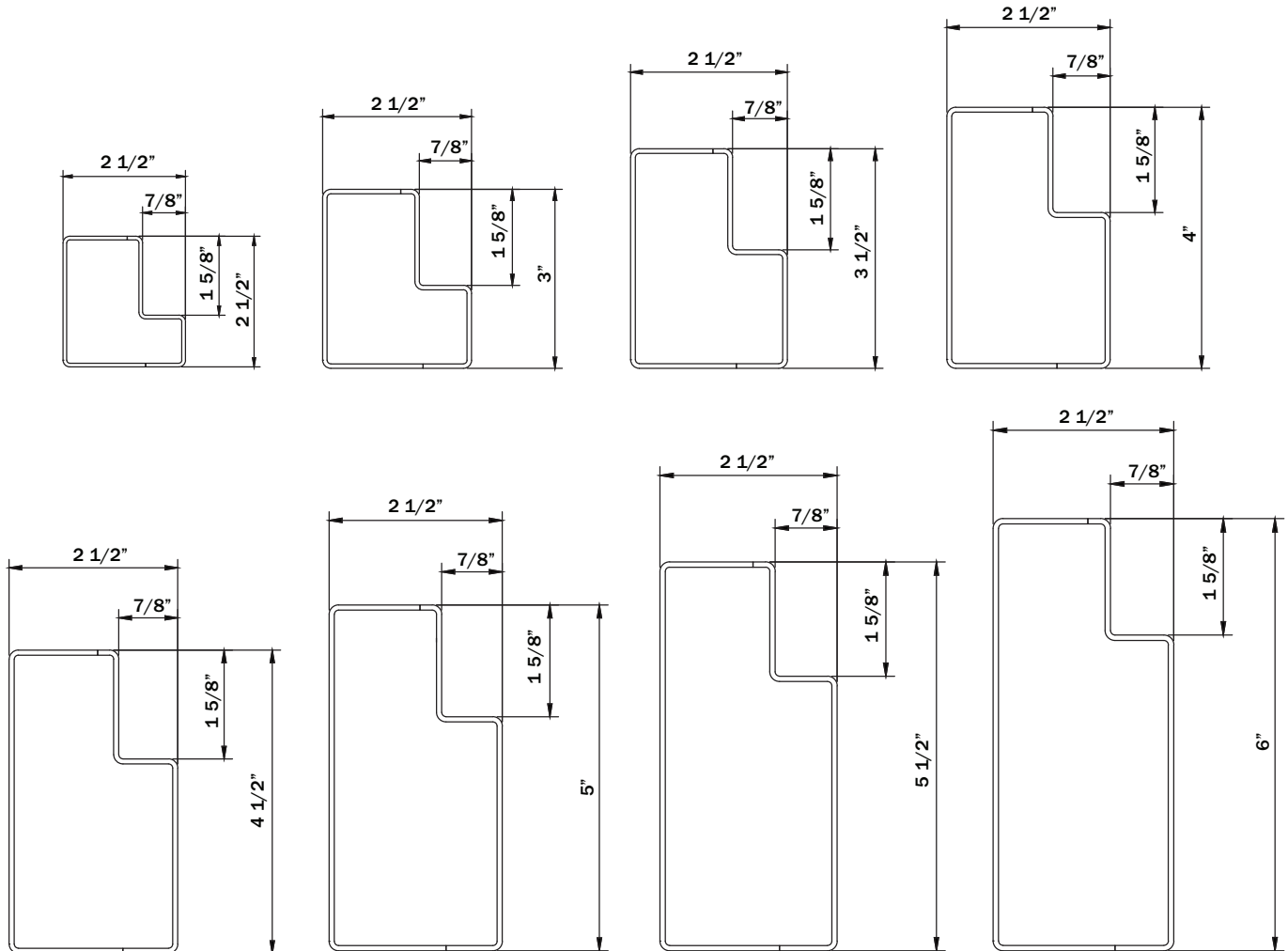
BEAMS 14 GAUGE - 4 PIN

SPAN	3"	3-1/2"	4"	4-1/2"	5"	5-1/2"	6"
48"	7,400	9,080	10,960	13,030	15,300	17,720	20,340
54"	6,680	8,160	9,820	11,670	13,670	15,830	18,140
84"	4,080	5,530	6,590	7,750	9,010	10,390	11,860
90"	3,610	4,880	6,200	7,280	8,460	9,730	11,110
96"	3,220	4,340	5,730	6,870	7,970	9,160	10,450
102"	2,900	3,890	5,120	6,500	7,540	8,660	9,870
108"	2,620	3,510	4,610	5,960	7,160	8,210	9,350
114"	2,390	3,190	4,180	5,380	6,810	7,810	8,880
120"	2,190	2,910	3,810	4,890	6,200	7,280	8,280
126"	2,010	2,670	3,480	4,470	5,650	6,760	7,680
132"	1,860	2,460	3,200	4,110	5,180	6,290	7,140
138"	1,720	2,270	2,950	3,780	4,770	5,870	6,650
144"	1,600	2,110	2,740	3,500	4,400	5,460	6,210

Notes:

Capacities Based Upon Pair of Beams · Capacities Are Determined Per ANSI 2012 and RMI 2012 · Design Engineer Must Be Consulted For Loads of 10,000 lbs. or more
 Uniform Distribution of Weight Is Assumed Along The Entire Length of Both Beams · Capacities Are For Static Loads Only. Consult Seismic Engineer For Seismic Loads Values
 Shown Reflect The Capacity of The Beams Based On The Lesser of It's Strength In Bending or L/180 Deflection Criteria · Metrics table is measured in pounds. Drop beams, adjustable beams and other engineered beams available upon request. A 192" X 6" 14 gauge beam is available. Consult UMH or E.O.R. for 192" Beam Capacities.

BEAM CONFIGURATIONS





UNITED MATERIAL HANDLING, INC.
23900 Brodiaea Avenue, Moreno Valley, CA 92553
Ph: 866-323-RACK | 866-323-7225 | Fax: 951-657-4918
www.unitedmh.com

Sales Inquiries, email us at: quotes@unitedmh.com | General Information: info@unitedmh.com



[/UnitedMaterialHandling](https://www.facebook.com/UnitedMaterialHandling)



[/UnitedMH](https://twitter.com/UnitedMH)



[/company/united-material-handling](https://www.linkedin.com/company/united-material-handling)