

# STANDARD & HEAVY-DUTY ROW SPACERS



Standard Row Spacer



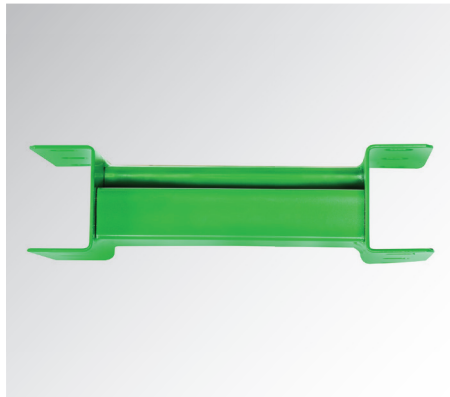
Standard Row Spacer

**Standard Row Spacers** are used to evenly space two rows of pallet storage racking that are adjacent to each other. The usable length of these lighter duty spacer components serve to support the minimal longitudinal flue space that is required in local fire codes.

**Heavy-Duty Spacers** are lateral braces that attach horizontally between two column sections of aligned uprights allowing them to withstand greater seismic forces and provide increased storage weight capacities.



Heavy Duty Row Spacer



Heavy Duty Row Spacer

## PRODUCT INFORMATION

ROW SPACERS	DESCRIPTION
<b>STANDARD &amp; HEAVY DUTY LENGTH SIZES:</b>	2"- 60"
<b>STOCKING COLOR:</b>	Galvanized (Regular Row Spacers), Green (Heavy Duty Row Spacers)

**Note:** Additional Sizes Available Upon Request. Customize to Order. Row spacers lengths are shown as a usable length or the physical distance between the adjacent uprights face, not the spacer length itself.